

Annual Report

1. Introduction

Welcome to the annual scrutiny report, which highlights the key scrutiny activities and developments in North East Lincolnshire Council during the 2020/21 Municipal Year. The report provides a summary of the work undertaken by scrutiny in 2020-21 and outlines future work programmes.

This year has been a very different one for the council's scrutiny panels as the impact of the COVID-19 pandemic has been at the forefront of everyone's attention. Nevertheless, scrutiny has played a key role in monitoring the council's response to the pandemic, not just for our communities but also for the local economy. As such, the panels have continued with their normal cycle of meetings, albeit on a virtual basis. While this has placed some limitations on scrutiny's work, for example, a restriction on task and finish activity via select committees or working groups, Elected Members have responded well to this new way of working and have been able to provide challenge on key areas of council activity.

While the Communities Scrutiny Panel has had general oversight of the council's response to the pandemic, it has also had an obvious impact on the work of the other panels. The Health and Adult Social Care Scrutiny Panel has received regular updates on the work across all sectors to tackle the virus. The Children and Lifelong Learning Panel has been closely monitoring the impact on children and young people. The Tourism and Visitor Economy Panel has been restricted in its work but has continued to focus on recovery. The Economy Scrutiny Panel has arguably been the busiest of all the panels, certainly in terms of the number of meetings it has held, not only looking at recovery of the local economy but also heavily involved in scrutinising proposals which have resulted in significant investment for the regeneration of Grimsby town centre and the borough. Aside from COVID-19, other topics that have been the subject of scrutiny included: elective home education; food banks; health inequalities; empty homes and heritage improvements in the resort of Cleethorpes. Coordination of the work of the panels has been overseen by the Executive and Scrutiny Liaison Board, comprising the Chairs of the five scrutiny panels, the Leader and Deputy Leader of the Council. The panels have continued to inform Cabinet decision-making, through both pre-decision scrutiny and the call-in mechanism; further details of which can be found within this report.

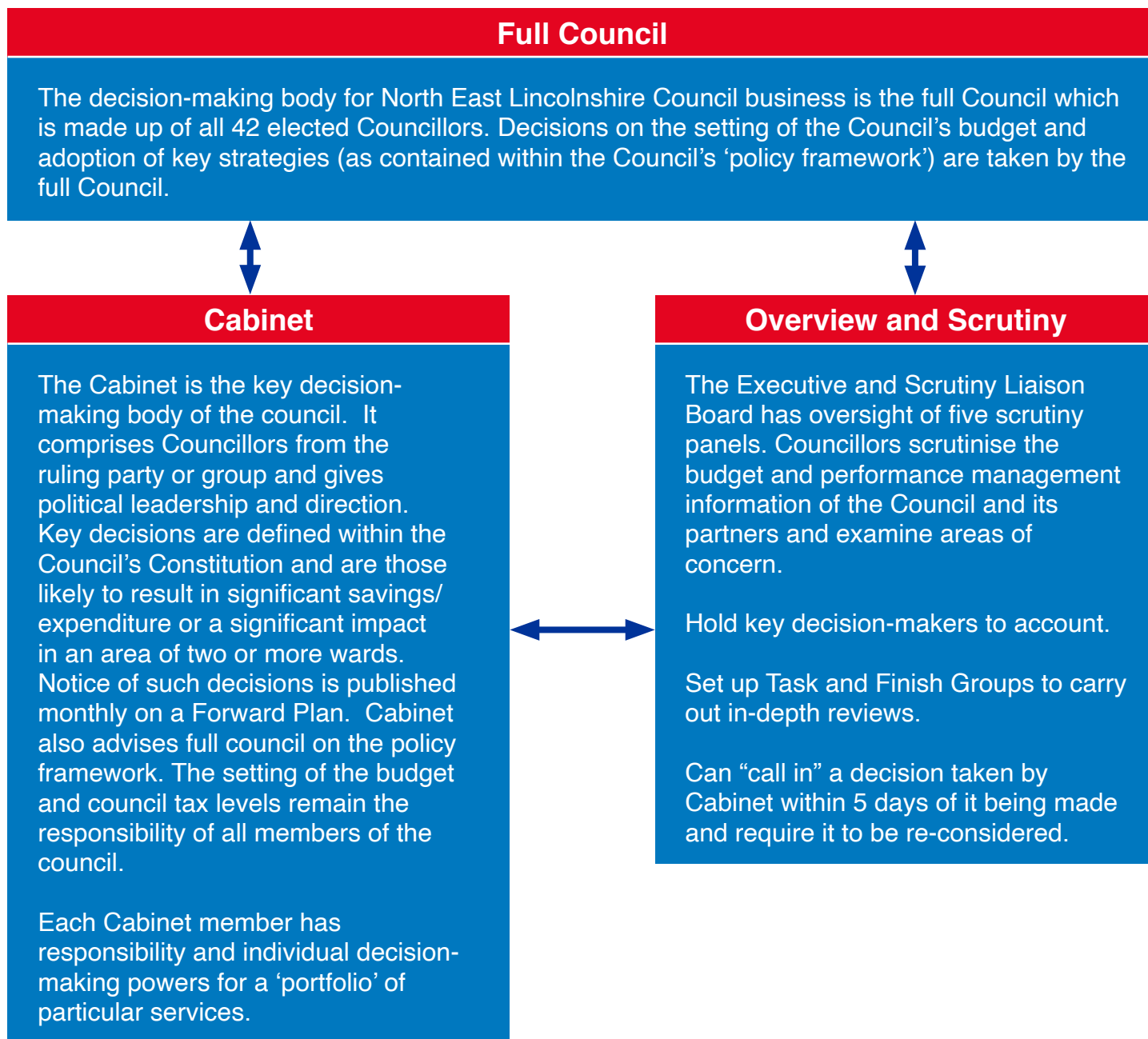
Scrutiny has a key role within the Council's governance arrangements to support effective delivery of the council's priorities and provide challenge, as appropriate, to make sure that the basis for decisions being taken by the Council are robust and this work will resume in the next Municipal Year. Key areas of focus during the coming year are expected to include recovery from the pandemic, children's oral hygiene and dentistry, the refresh of the council's economic strategy, the local impact of the government's integrated care proposals and digital inclusion. The panels will be looking forward to re-engaging with residents and getting back out into communities as we hopefully return to a degree of normality over the coming year.

*Helen Isaacs, Statutory Scrutiny Officer
Assistant Chief Executive
May 2021*

Contents

1	Introduction	1
2	Scrutiny in North East Lincolnshire	3
3	Scrutiny	
	• Children and Lifelong Learning Scrutiny Panel.....	5
	• Communities Scrutiny Panel.....	7
	• Economy Scrutiny Panel.....	9
	• Health and Adult Social Care Scrutiny Panel.....	13
	• Tourism and Visitor Economy Scrutiny Panel.....	15
4	Get Involved in Scrutiny	17

2. Scrutiny in North East Lincolnshire



Please note that decisions regarding certain functions are determined by 'regulatory' committees of the council such as the Planning Committee and the Licensing and Community Protection Committee. Such decisions do not fall under the remit of Scrutiny. There is co-ordination between Scrutiny and the Audit and Governance Committee on matters of mutual concern.

As part of the annual review of the Constitution, improvements have been discussed, across political groups, to strengthen the operation of panels including new guidance for Officers and Members attending scrutiny, induction and training for chairs and greater transparency in respect of the matters discussed at, and referral into, the Executive and Scrutiny Liaison Board.

Overview

Scrutiny is a process that enables Councillors who are not Members of the Council's decision-making process to review and scrutinise matters affecting local people.

The role of Elected Members performing the overview and scrutiny function is to:

- Review and report on issues that affect the economic, environmental and social well-being of local people.
- Act as a check and balance to the Council's decision makers, examining and reviewing decisions and holding the Executive to account.
- Consider the work of public bodies operating outside the Council but which affect local residents, for example, local health services.
- Contribute to the development of future policies and strategies that will help improve services for local people.
- Involve local people in council decision making:
- Scrutiny is carried out using a range of methods, including panel meetings, working groups and select committees, but in all cases the process is non-political and Members from all groups participate.

Our Panels

Our panels and chairs this year were:

Children and Lifelong Learning Scrutiny Panel – Councillor Oliver Freeston

Health and Adult Social Care Scrutiny Panel – Councillor Henry Hudson

Economy Scrutiny Panel – Councillor Tom Furneaux

Communities Scrutiny Panel – Councillor Paul Silvester

Tourism and the Visitor Economy Scrutiny Panel – Councillor Keith Brookes

Thanks are noted to Councillors, on all panels, for their contribution and forbearance with the move to the virtual panels for the whole of the last Municipal year.

3. Scrutiny

Children and Lifelong Learning Scrutiny Panel

Although this has been a different type of year for the Children and Lifelong Learning Scrutiny Panel, it has not meant that the panel have not been able to review or scrutinise decisions and actions made by the Council; it has just meant that the panel has had to look at the way it has been working a little bit differently.

Throughout the year the panel have been monitoring changes to children services due to the COVID-19 pandemic.

The pilot of the Autism Spectrum Conditions access pathway, which was due to be launched in April 2020, had to be placed on hold due to the need for extensive face to face contact. However, the panel was reassured that a new, virtual, way of working had been created and the current pathway was being refined along the way. The panel welcomed that feedback had shown that the experience families were having had improved but it was agreed to monitor this further.

After the outcome of Ofsted's focused visit to North East Lincolnshire's children's services last year, the panel have played an important role in the ongoing monitoring of the improvement plan. In July 2020, the panel received a report that summarised the Council's response to the monitoring visit and were informed in detail on the progress of the identified actions within the Department for Education (DfE) Improvement Notice. Members were happy to be informed that DfE had sent a letter to the Council confirming that the escalation measures had been removed and they welcomed improvements continuing to be made.

One area that was highlighted as part of the Ofsted's initial visit was Elective Home Education (EHE). This has been an ongoing feature within the panel's work programme over the years. In March 2020, three members of the panel undertook a EHE working group to examine the issue in more detail and to gain an understanding of the reasons for the increasing numbers. The panel welcomed the working group's findings and this resulted in a recommendation for the Portfolio Holder for Children, Education and Skills to write a letter to government ministers to ask for a review of the powers for local authority intervention in elective home education.

The panel have also received an update on the services for children and young people with Special Educational Needs and Disabilities, with a focus on the work that had been implemented during the COVID-19 pandemic. Members concerns were around the support that children and families were receiving in mainstream and specialist education following the closure of schools. However, it became apparent that regular communication had been maintained and special schools had remained open.

"I would like to place on record my thanks to panel members, officers and members of the Democratic Services team for the dedication shown this year.

I believe we have effectively scrutinised and improved the workings of the Department. I am pleased that we worked together in harmony with one common goal.

It has been a great experience for me to Chair the meetings and I did so to the best of my ability."

Councillor
Oliver Freeston
Chair





Throughout all these topics one of the main concern's the panel had was around children's mental health and their emotional wellbeing. This linked to all service areas that the Council were adapting to adhere to government guidelines during the pandemic. Members wanted reassurance that services were in place to be able to support issues that may come to light after the pandemic was over. It was particularly useful that the voice of the child had continued to be a focus of the panel as this provided assurance to members directly from young people themselves. The input of the Youth Voice representative on the panel was particularly welcomed in this regard and, following an update on campaigns being conducted by the Youth Voice and Influence Group, the panel suggested that an approach be made to elected members to enquire whether they would be willing to donate any spare ward funding to help the group to carry on implementing their campaigns.

The lifelong learning element of the panel focused on the numbers of young people who were not in education, employment, or training (NEETs). The panel received the latest figures and were pleased with the work that was going on with the cohort of young people. Some concerns were raised around the young people who were not actively seeking work. However, Members were happy to hear that NEETs practitioners were assigned to each young person and a relationship would be built to understand why they did not currently aspire to work.

Children's oral health also became a topic of interest to the panel, particularly around whether there was sufficient dental capacity in North East Lincolnshire. After receiving a briefing paper on the Council's oral health improvement plan, the panel recommended that the Portfolio Holder for Children, Education and Skills write a letter to all primary schools in North East Lincolnshire asking them to consider incorporating oral hygiene into their curriculum.

The panel considered a call-in of a decision taken by Cabinet in relation to the review of the family hub service. Concerns were raised about the impact of the proposed closure of family hubs and that this matter had not been referred to the panel prior to the decision being made. The panel noted that the decision related to building rationalisation rather than a reduction in services and welcomed the offer of the portfolio holder for the outcome of the proposed engagement to be brought back to the panel for further discussion. On that basis, it was agreed to release Cabinet's decision for implementation.

Other areas that had been scrutinised this year included:

- Educational attainment in North East Lincolnshire
- Early Help Offer

The panel requested that the following work be carried forward into next year's scrutiny work programme:

- Children's Oral Hygiene and Dentistry
- SEND inspection written statement of action.
- New approach to the support and specialist assessment for children with additional needs (Access Pathway).

Communities Scrutiny Panel

The Communities scrutiny panel were given the remit of scrutinising the council's response to the coronavirus pandemic through the COVID-19 Recovery Plan. Challenge by the panel throughout the year was made around the source and management of shielding lists; financial impact; funding sources; arrangements for rough sleepers; long term homelessness; and care homes. The panel took an opportunity to praise and thank council staff that had responded so readily and compassionately to undertake extraordinary responsibilities during the crisis. Special urgency decisions made under the emergency governance framework were brought on several occasions throughout the year for the panel to review and scrutinise.

Anti-social behaviour featured on the panel's work programme for 2020/21 particularly around damage to parks and play equipment, alleyways, graffiti, noise nuisance and matters related to substance misuse. At a panel meeting they considered the new anti-social behaviour policy which the panel welcomed and were particularly pleased to hear about the areas of focus raised and the steps that were being taken to tackle these issues with community protection warnings and notices.

The panel considered the Public Space CCTV Strategy and details of a capital investment of £1m to upgrade the current CCTV provision. Members were pleased that the location of the cameras were being reviewed and would be located in hot spot areas to help reduce anti-social behaviour and make residents feel safe.

Chief Inspector Paul French attended a panel meeting and provided an update on the latest crime statistics from Humberside Police. Members felt there needed to be more online safety awareness amongst children and young people in schools around the dangers of social media. It was agreed that

"This has been a challenging year with all meetings conducted virtually and I would like to thank members and officers for their professional input and contribution to the panel. There has been some outstanding and effective work by the panel not least scrutinising the local authority and partner response and recovery programme relating to the Covid-19 pandemic and the required Emergency Decisions. Over the course of the year the panel have witnessed significant improvements in waste management and recycling and seen a decline in anti-social behaviour which were two areas of real concern highlighted by the panel."

Councillor
Paul Silvester
Chair





a report would be brought back to a future panel meeting to provide an update on the work going in schools around online safety.

The panel were introduced to the Community Food Co-ordinator in North East Lincolnshire, who explained her role and the work undertaken by the Food Bank Forum to coordinate and work with the different providers across the borough, encouraging them to work together, with the aim of reducing the reliance on food parcels and free meals and to work creatively with communities to build resilience. Considering the COVID-19 pandemic, the panel were concerned about the increasing reliance of the community on the food banks/providers and were given information on signposting and the eligibility criteria for food parcels to help inform residents.

The Waste and Recycling Strategy 2020-2035 was presented to the panel. The strategy was welcomed and the team congratulated for their hard work throughout the transition to the new recycling scheme across the borough. Going forward the panel were keen to hear about the progress made around reducing the contamination with the new mixed recycling and future projects and initiatives.

The panel received a call-in of a decision taken by the Portfolio Holder for Environment and Transport in relation to the fees and charges for Bereavement services. Concerns were raised about the timing of the decision to increase charges in a pandemic were inappropriate and above rate of inflation, creating a disproportional impact on residents with lower incomes. The panel noted the concerns but agreed to release the Portfolio Holder decision for implementation given that there had not been an increase for two years and our fees were below the levels of other local authorities.

In addition, the panel considered reports/presentations on:

- European Union Transition
- Rough Sleeping Strategy
- Humberside Fire & Rescue Consultation
- The 2021 Census
- Community Recycling Centres and Bring Too sites
- Public Space Protection Order review

Scrutiny annual report 2020-21

- Depot Rationalisation
- Litter Strategy

The following work remains of interest to the panel and will be carried forward into next year's scrutiny work programme:

- Digital inclusion
- Environmental crime

Economy Scrutiny Panel

It has been another hectic year for the Economy Scrutiny Panel with five additional special meetings called to give opportune consideration of key issues outside of its five scheduled panel meetings.

Grimsby Town Centre has been high on the panel's agenda throughout 2020/21. In fact, three of the panel's five special meetings have given timely and in-depth pre-cabinet scrutiny and influence on key decisions relating to significant investment proposals for the regeneration of the town centre. Members comments and challenge were duly noted and considered by Cabinet in its decision making relating to:

- Future High Street Funding Programme
- Grimsby Town Centre Masterplan
- Grimsby Town Centre Investment Plan
- Public realm improvements at the Riverhead Square

Last year, the panel was consulted and made recommendations to Cabinet influencing the refresh of the Housing Strategy Action Plan. This year, its focus has largely been on empty homes. Members were consulted on the council's empty property strategy 2020/2024 in June, raising issues around enforcement, unreported empty homes, the impact of COVID-19 and homes empty more than five years. The panel's comments were noted and considered by Cabinet when the strategy was formally adopted. The panel also received a requested update report on empty homes and social housing in March 2021.

The panel was consulted on a review of the Local Plan in June. Members welcomed the review and challenged on climate change, economic uncertainty, changing housing needs, home working, prioritising urban development sites and the timing of the review. The panel's future influence on this project is paused, pending the outcome of government policy change.

The Council's declaration of a climate emergency prompted the panel to report, in September, on the development of a carbon roadmap. Members scrutinised matters of government policy; public engagement, especially with young people; carbon capture; and potential funding streams. The panel resolved to receive regular updates on progress and development of the council's ambition to be carbon neutral by 2050.

"The Economy Scrutiny Panel has been extremely active in what has been an unprecedented year for all. We have held consecutive monthly meetings from June 2020 to March 2021 scrutinising a wide range of key issues for the borough. I would like to place my thanks on record to all involved with the panel and the way in which the transition to remote meetings has been handled during this last year."

Councillor
Tom Furneaux
Chair





The panel maintained its interest in provision of a designated stopover site for Gypsies and travellers receiving two updates on progress in September and March. Members heard that previous endeavours were under review in light of diminished need. Portfolio holders attended the panel meetings and responded to several questions on the subject.

In November, Members enjoyed a first look at proposals to develop a Grimsby – Immingham cycle highway prior to Cabinet's approval to accept £2.243m grant funding. Although pleased to see the proposals, challenge from panel members centred on dangerous road junctions/sections, possible quieter routes and timescales. Later on, in January, pre-Cabinet consideration by the panel was also sought regarding the acceptance of Emergency Active Travel funding. This was aimed at promoting physical activity, reducing carbon emission, and supporting safe access to employment and education. Members commented on illumination of cycleways, segregation of highways users, gutter repairs, hazardous junctions, and utility repairs. The panel will receive the final layout and design at a later date.

A special meeting in December looked, in part, at a long-awaited report on a review of Europarc bus service subsidy costs and options for future delivery prior to consideration by Cabinet. Panel members understood the rationale to extend the subsidy for a limited period. The following issues were raised; the high cost of subsidy, the council's current budget position, lack of engagement from local businesses, alternative external funding and plans for a 'bus bridge'. The panel's comments were noted and referred to Cabinet.

The panel continues its scrutiny of the Council's strategic partnership with Engie. This is routinely achieved throughout the year via regular reporting to the panel on agreed performance indicators and, more recently, in monitoring the partnership's improvement action plan. In addition, at a special meeting in December, the panel considered a report on the future delivery of the services currently provided through the Regeneration Partnership. Members scrutinised issues including the previous cabinet working group, organisational culture, financial matters, commercial sensitivities, contract management, governance, improving partnership relationships, and the potential for services to be brought back in-house. After a lengthy debate, the report's recommendations were supported. In January, the panel then considered a call-in of Cabinet's decision to extend the council's agreement with Engie to 30 June 2025. The call-in asked that the matter be referred to full council or back to Cabinet for further investigation. However, after a lengthy debate, Cabinet's decision was released for implementation.

A Cabinet decision to dispose of Kent Street multi-use games area (MUGA) prompted both a call-in and a public petition of 2073 signatures which were presented to the panel in January. The disposal of the MUGA included an area currently established as a skatepark that would be lost as part of a proposed development. The petitioners wished to retain a free to use skatepark in the East Marsh area. The call-in proposed that the skatepark be kept open and this was subject to a lengthy debate which covered issues such as the community asset transfer process, consultation, the council's financial constraints, the anti-social impact of closing the facility, and the benefits of the proposed plans to improve the MUGA. Following a vote, the matter was referred back to Cabinet with a recommendation that it reconsider its decision and provide some assurance that any new provision would be in place before the skateboarding and BMX community were asked to relocate. While Cabinet subsequently reaffirmed its original decision, it also authorised officers to engage with and support the skateboarding and BMX community to explore options to relocate the skatepark.

During this municipal year, two further cabinet decision were called-in which required the consideration of the Economy Scrutiny Panel.

- Local Enterprise Partnerships (LEPs). Cabinet's decision to remain in the Greater Lincolnshire LEP, rather than the Humber LEP was called in. A special panel meeting in August brought about a lengthy and passionate debate which saw matters such as industrial strategy, potential devolution and respective funding awards raised. A proposal that the matter be referred to full council was lost, with the decision eventually released for implementation.
- Greater Lincolnshire Joint Strategic Oversight Committee (GLJSOC). A recommendation from Cabinet to full Council supporting and authorising a joint committee to explore strategic issues and opportunities across greater Lincolnshire was called-in to the January panel meeting. The call-in requested that the matter should be referred back to Cabinet with a recommendation that the proposed body invite not less than all unitary, county and district authorities currently in operation in the Greater Lincolnshire area. Following a debate, the panel resolved that Cabinet's decision be released for implementation.

As a matter of urgency, at its January meeting, the panel received a briefing on a Humber Freeport Bid submission from the Humber Leadership Board. Members heard that a successful bid would be transformational for the Humber region. Freeports are special economic zones with different rules to make it easier and cheaper to do business. They include infrastructure planning, customs and favourable duties and taxes. Members sought clarification on the membership of the Humber Freeports Group, the extent of the freeport zones and a future role for scrutiny in the event of a successful bid. The success of the Humber Freeport bid was subsequently announced in March.

Following on from the panel's consideration of Kent Street MUGA, the panel requested a report on the council's approach to community asset transfers. This was received at its March meeting. The panel sought assurances on the proper process and policy being consistently applied, noting public perception and the importance of good governance. The approach was currently subject to a refresh and the panel was able to influence the portfolio holder's eventual recommendations to Cabinet.

The panel's annual look at the council's Local Transport Plan (LTP) Delivery Plan was undertaken in March 2021 prior to Cabinet consideration. A number of issues were raised including priority potholes, the reporting hotline, and A180 improvements. Members' comments were referred to Cabinet.

The Humber Leadership Board's Humber Estuary Plan was brought to the panel's attention in March. The plan drew on earlier work to develop a Humber Local Industrial Strategy, which had been informed by extensive local engagement, analysis and independent expert challenge.

In addition, the panel received monitoring reports facilitating challenge on the following:

- Quarterly finance monitoring reports
- Public toilets

The following work remains of interest to the panel and will be carried forward into next year's scrutiny work programme:

- South Humber Inward Investment Programme*
- Economic Strategy (refresh Autumn 2021)*
- Energy Programme*
- Strategic housing empty homes / social housing / Housing Zone Action Sites / Playing Pitch Strategy*
- Gypsy and travellers' designated stopover site*
- Local Plan review*
- LEP funding
- Impact of the COVID-19 pandemic
- Grimsby town centre regeneration and links to car parking strategy (residents' parking)
- Monitoring the success of the Grimsby Master Plan

*from 2020/21 work programme.

Health and Adult Social Care Scrutiny Panel

The impact of the COVID-19 pandemic, particularly on adult social care, was of great concern to the panel during this municipal year and they welcomed the work by the CCG and partners in a short space of time in terms of infection control, PPE supplies and other help and support for the sector under the very difficult circumstances. The panel received the local outbreak management plan and throughout the year the panel continued to receive regular updates tracking infection rates, hospitalisation figures, testing and the roll out of the vaccination programme. The panel was reassured that clear actions were being taken to reduce deaths and keep transmissions down.

Following on from the adult social care charging policy scrutiny working group where the members looked at proposals for public consultation, the panel received a report on the outcome of the public consultation into the potential policy changes that were to take effect from 1st April 2021. Members were particularly concerned about the impact on people financially and that was reflected in the discussions. Following a review of each proposal, the panel made recommendations to Cabinet which were subsequently approved for implementation in April 2021.

Over the past few years, the panel have heard from Northern Lincolnshire and Goole NHS Foundation Trust (NLAG) and Hull University Teaching Hospital about service changes that would impact residents. In September 2020, NLAG attended the panel meeting to explain the future of the haematology services following on from a peer review which had highlighted significant risks about the service provision. Changes to the service needed to take place to ensure its sustainability for the local area. The panel supported the proposed plans for temporary service changes to the haematology service because patient safety was paramount. The panel have also been keen to follow up on the progress of any services change and members requested that NLAG come back to a future meeting with an update on how the changes were taking effect.

The panel continued to monitor the progress of the NLAG Care Quality Commission inspection action plan. Colleagues from NLAG attended the meeting and updated the panel on progress made against the six priority areas across the trust. Members queried the 26 weeks delay for routine scans and were reassured by the purchase of the new state of the art scanners and welcomed the work that was being done around of end of life care.

“This has been an unprecedented year, with the main focus being on the COVID-19 pandemic by ensuring that the council, together with partners were safeguarding the vulnerable, implementing the track and trace system, the roll out of the vaccine and coping with the high demands on care homes and hospital admissions. As Chair I have been very impressed with the information that was received to allow the panel to seek the reassurance required during this time.

Health inequalities was a focus of the panel and will continue into the work programme for 2021/22, especially as the lockdown restrictions are eased and transition into the new normal.

I would like to take this opportunity to thank officers and partners for their hard work and dedication throughout the difficult times that we faced.”

Councillor
Henry Hudson
Chair





The panel were shown the new design concept and plans for the new emergency department at Diana Princess of Wales Hospital in Grimsby, which at £130m was the largest capital investment across the hospital trust and was expected to bring significant benefits for patients. Members welcomed the new development and asked that consideration be given to transport, design and access.

The panel received an update on the Government's proposals for integrated care, which presented a major change for the NHS and for the health and care system locally. The panel welcomed the opportunity to build on the integration and partnership working that was well established in North East Lincolnshire and expected to be involved in further scrutiny of the proposals.

Health inequalities featured on the panel's work programme and the panel wanted to understand what work was planned to bridge these gaps. The Director of Public Health's annual report was considered, which focused on health inequalities and a number of recommendations aimed at tackling the issues. The panel were interested to hear the causes, particularly around access to healthcare and the social determinants of health for children and adults. The panel were reassured that actions in the report would be monitored and progress reported through this panel.

In addition, the panel considered reports on:

- Adult Social Care Annual Complaints
- Care Home winter plans
- Humber Acute Service Review
- Safeguarding Adults Board annual report
- Children's Oral Health and Dentistry

The following work remains of interest to the panel and will be carried forward into next year's scrutiny work programme:

- Covid-19 Epidemiology*
- NLAG plans for the new A&E department*
- Integrated Care System*

- Service changes to Haematology*
- Humber Acute Service Programme*
- Post Covid healthcare services
- Health inequalities

*from 2020/21 work programme.

Tourism and Visitor Economy Scrutiny Panel

This year was different for the members of the Tourism and Visitor Economy Panel, due to the COVID-19 pandemic their work has been somewhat restricted. However, the panel have progressed their Work Programme as best they can in the circumstances and have received updates on the following:

- Quarterly finance monitoring reports
- Public toilets – specifically along the promenade
- Historic vessels and their conservation management plan
- Heritage action zone status
- Cultural development fund, including culture and heritage assets
- Access to libraries and their services during covid; and
- Economic recovery (following COVID).

In addition to these areas, the panel have requested that the establishment of a motorhome aire be considered and an options appraisal conducted and reported back to the panel. It was felt that travelling in motorhomes was becoming more popular and therefore an opportunity for the borough to boost its tourism attraction. Further work on this is due to be undertaken during the next municipal year.

This year a dedicated Resort Manager was recruited and attended the panel to meet members and explain the short- and long-term plans for his role. Although the pandemic had somewhat altered his plans for this year, work was ongoing in the background to increase tourism, including during the winter months with the aim of achieving eco-tourism. In conjunction with this, the panel later received a presentation on the review of the Cleethorpes Habitat Management Plan which complements the Resort Manager's plans.

At the panel's final meeting in April, an update was provided on how the resort was being made safe to open in accordance with the Government Roadmap. A number of measures were in place and the resort was already bouncing back in a safe manner thanks to a combined effort from officers and partners. Members also heard about what was being done to support businesses with the reopening. The panel were pleased to hear of the hard work being put into reopening the resort following lockdown and would continue to monitor progress via their meetings next year.

"It has been a pleasure and a privilege to chair this panel, my thanks go to all council members and officers for the work that they put into producing the reports and ensuring any recommendations made by the panel were carried out were possible."

A keen interest came from all members in order to make a difference to the services provided by the authority and they look forward to the coming year in the hope the area will be Covid free."

Councillor
Keith Brookes
Chair



The panel were pleased to have received questions from the public this year, Question Time was not something that had been fully utilised by the public but the questions received would result in changes to the resort of Cleethorpes, including the renaming of the Boating Lake to 'Cleethorpes Boating Lake and Waterfowl Gardens'.

Overall, the panel were looking forward to seeing the plans and hard work from this year coming to fruition in 2021/22 with the anticipated return to 'normality' and being able to 'open our doors' to tourists once again.

In addition to priority outcomes within the panel's terms of reference, the following topics will be considered for next year's scrutiny work programme:

- The History Centre
- Archives Review
- Delivery of the culture and heritage framework / cultural development programme
- Open space strategy
- Potential Motorhome Aire development
- The Cleethorpes Regeneration Programme
- Development of a Local Tourism Action Plan
- Regeneration of the Grimsby Central Library (as part of the Master Plan)
- A refresh Cultural and Heritage Strategy delivery action plan; and
- Looking at how the Council attracts new development opportunities for tourism (Cinema's/Caravan Parks etc)



4. Get involved in scrutiny

One of the key roles of scrutiny is to work on behalf of residents to address the issues that are causing concern to people who live and work in the borough. We are using this report to tell you what we have done and we want you to tell us what you think we should be doing next. Please use the contact details at the end of this report if you would like us to focus on a particular issue in future.

All agendas and minutes of scrutiny panels as well as reports from scrutiny working groups are available by following the links on our website – nelincs.gov.uk

This report is also an opportunity to say thank you to everyone who has contributed to the scrutiny process over the past twelve months. To be able to function effectively, scrutiny relies on the invaluable knowledge and expertise of witnesses. Last year a wide range of individuals and organisations assisted us in our work, including:

- Service users
- ENGIE
- Humberside Police
- Humberside Fire and Rescue Service
- East Midland Ambulance Service
- NHS Foundation Trust

But we are not content to leave it there...

Members of the public are:

- Welcome to attend scheduled scrutiny panel meetings to observe local scrutiny in action. To find out what is being discussed and what to expect please have a look at the website or contact the scrutiny team.
- Encouraged to make suggestions for future scrutiny reviews by contacting your local councillor or the scrutiny team. You can do this by email, post or telephone.
- Able to approach councillors with your views on specific issues so that these can be added into the debate on the scrutiny panels
- Able to speak on specific issues, with the prior permission of the panel chair.

Scrutiny cannot promise to form the same conclusions as you do but your comments will be acknowledged and considered.

Sometimes we receive correspondence that raise issues outside of scrutiny or the council's remit – should this happen we will forward your comments to the relevant service or partner organisation and ask them to provide you with a response.

If you would like further information about scrutiny,
please use the contact details below:

Scrutiny and Democratic Services
North East Lincolnshire Council
Municipal Offices
Town Hall Square
GRIMSBY
DN31 1HU

Tel: 01472 324121

Email: democracy@nelincs.gov.uk

Website: <https://www.nelincs.gov.uk/councillors-and-democracy/decision-making/scrutiny/>