

## CABINET

<b>DATE</b>	14/07/2021
<b>REPORT OF</b>	Councillor Stewart Swinburn, Portfolio Holder for Environment and Transport
<b>RESPONSIBLE OFFICER</b>	Sharon Wroot, Executive Director for Environment, Economy and Resources
<b>SUBJECT</b>	Community Recycling Centre Rationalisation- Phase 1- Extension of Boundary
<b>STATUS</b>	Open
<b>FORWARD PLAN REF NO.</b>	CB 07/21/01

### CONTRIBUTION TO OUR AIMS

The recommended option will contribute directly towards NELC's aim of supporting the development of '**Stronger Communities**' by improving services for residents of the borough. Improved access to Community Recycling Centres (CRC) will enhance customer experience for residents and contribute towards our environmental aims by encouraging recycling.

The limitations of the current CRC sites as they stand are a barrier to achieving several ambitions for environmental services such as:

- Providing excellent recycling and waste disposal facilities for the public that can accommodate a growing population: The new layout will prioritise recycling first, the last skip will then be for collecting unrecyclable materials to make energy from waste.
- Ensuring a resilient and efficient service for waste collection and disposal: With many new housing estates being built within NEL and plans for more, with a percentage of council tax going towards a CRC provision, it is important the site can efficiently keep up with demand. The current CRC already experiences large queues and with a growing population, this would only increase.

An improved CRC would also help support a Stronger Economy by:

- Providing improved and increased provision for partner organisations and local businesses.
- Developing a service provision which supports the local economy.
- Being an environmentally responsible authority.
- Developing Commercial opportunities: The option to offer a commercial waste provision for NEL businesses in the future.

### EXECUTIVE SUMMARY

A Cabinet decision in February 2020 supported a more detailed review of the CRC sites, with an aim of creating two modern sites in more optimal geographic

locations. This report proposes a staged approach to reaching the long term aim, to provide more rapid improvements to service provisions. A bigger footprint for the CRC will enable the development of a more efficient service to deliver vital functions to the growing community of North East Lincolnshire. Simply improving traffic flow alone should help mitigate some of the current issues it faces. It will also allow for possible future refurbishment of the CRC in order to make it more accessible and recycling focused.

## **RECOMMENDATIONS**

It is recommended that Cabinet:

1. Approves the decision to extend the current Grimsby Community Recycling Centre boundaries to allow for better traffic flow and an improved recycling offer.
2. Instructs the Executive Director for Environment, Economy and Resources to further consider the leasing options for the former Gilbey Road depot land adjacent to the Community Recycling Centre, subject to a further report to Cabinet and secured capital funding.
3. Delegates responsibility to the Executive Director for Environment, Economy and Resources in consultation with the Portfolio Holder for Environment and Transport to deal with all matters arising from and ancillary to the above.

## **REASONS FOR DECISION**

The proposed changes to the Grimsby CRC site are linked to the Depot Rationalisation project, as the land currently housing the NELC owned Gilbey Road Depot will become vacant once Waste Service relocate to the remodelled Doughty Road Depot. Utilising this land, by extending the boundaries of the CRC into part of the Gilbey Road depot, offers an excellent opportunity to improve the facilities we provide at the Grimsby CRC site. This leaves the remaining depot land available to explore income generation opportunities.

### **1. BACKGROUND AND ISSUES**

- 1.1 The Council currently has two CRC sites; one in Immingham and one in Grimsby. The CRC at Grimsby experiences high volumes of visitors with many vehicles passing through the facility each day. The high flow of traffic through the site often leads to traffic congestion along the access road, which can cause issues for the large vehicles attempting to access the depot site.
- 1.2 On 12<sup>th</sup> February 2020, Cabinet approved an outline business case to review future options for CRC sites. This included an option to relocate one or both of the sites to improve accessibility across the Borough. Extensive exploration work has been conducted, which has not identified an immediately available favourable solution. This has highlighted the need to implement service improvement in the short term, whilst longer term proposals are considered.
- 1.3 The poor layout of Grimsby CRC impacts residents' ability to recycle effectively. Currently due to space restrictions on site, the first skip that visitors pass is the energy from waste skips. It would be more beneficial to change this to allow visitors to the site to be given recycling options first and use of the energy from waste skips last, once they have recycled all of the items they can. Not only does this increase the council's collection of recycled waste but meets our aim

to better educate the public on recycling and responsible waste disposal. This new layout would require more space than is currently available. As the council owns the land both the CRC and the Gilbey Road depot are sited on, there is a clear opportunity to align CRC plans to the Depot Rationalisation work and make the most of the opportunity this offers.

1.4 As depot services are relocating to Grimsby Town Centre in 2022/23, this leaves vacant land at the Gilbey Road site. As a short-term solution, the proposal is to increase the footprint of the Grimsby CRC by moving the fence boundary and making minor changes to the site. A basic plan of the proposed new footprint have been drawn up pending approval of this report (see Appendix A), taking advantage of some of the freed-up land from the depot site. This would allow space for additional skips and prioritising of the recycling skips first, improving the flow of traffic through the site and alleviating congestion along the access road. The remaining vacant depot land will be available to sell or lease out and generate potential income. As this area is likely to be within the freeport custom sites zone it is expected to be a highly marketable and attractive area to interested parties. Further work is needed to consider the opportunities this offers, investigating the most financially viable option to pursue, as income generated by the potential sale or lease will give the council a stronger financial position to continue with the phased improvements to CRC provision in the borough. On approval of the recommendations in this report a full business case will be drawn up to explore this opportunity, which will be presented to Cabinet once complete.

## **2. RISKS AND OPPORTUNITIES**

2.1 The extension of the boundaries will look to address the following risks:

- Poor traffic flow, leading to congestion on the access road.
- The authority not maximising recycling possibilities therefore not meeting national recycling targets or local strategic priorities.
- Failing to utilise vacant land left from the Gilbey Road Depot.

2.2 The extension of the boundaries will look to take advantage of the following opportunities:

- To allow space for the site to be futureproof and able to adapt to change.
- By not using the entire former Gilbey Road depot land, this gives future opportunities to sell or lease out the land to generate income.
- Improve the customer experience and increase recycling levels.

## **3. OTHER OPTIONS CONSIDERED**

Do Nothing - This option would leave the council with further vacant land adjacent to the site and without the additional space at the recycling centre, would also limit any improvement options in the future.

## **4. REPUTATION AND COMMUNICATIONS CONSIDERATIONS**

There are both positive and negative reputational implications for the council

which could result from taking the recommended decision. The improvement works would provide a more efficient and fit for purpose provision, but some residents may not feel the proposed changes go far enough. A full communication plan has been agreed with the council's communication team covering any statutory communication and consultation requirements.

## **5. FINANCIAL CONSIDERATIONS**

- 5.1 It is proposed that the costs associated with the extension of the Grimsby Community Recycling Centre, estimated at £57k, would be funded through capital. This proposal has been supported by the Business Development Group and Assistant Directors' Group
- 5.2 The new fencing will remain in place for at least five years and is not expected to require any ongoing revenue costs.

## **6. CLIMATE CHANGE AND ENVIRONMENTAL IMPLICATIONS**

- 6.1 The recommended option will provide environmental services with additional space to prioritise recycling at the site. The strategic layout will be primarily focused on recycling. This would assure residents of North East Lincolnshire the utmost is being done to recycle or dispose of their waste responsibly.
- 6.2 The improvement of traffic flow would result in less queues and would link to the Council's Energy strategy and vision for North East Lincolnshire as a Low Carbon and Renewable Energy hub.

## **7. CONSULTATION WITH SCRUTINY**

At this stage of the project, no specific consultation has been undertaken with the Communities Scrutiny Panel.

## **8. FINANCIAL IMPLICATIONS**

There is an existing capital budget within the approved Capital Investment Programme for Household Recycling Scheme for £923k which will now not be required until beyond the current MTFP period and these budget savings could be utilised to cover the proposed costs of the revised scheme.

## **9. LEGAL IMPLICATIONS**

Any legal issues arising on the recalibration of any property rights will be supported by in-house Assets and Legal teams respectively. No wider implications arise at this stage.

## **10. HUMAN RESOURCES IMPLICATIONS**

There are no direct HR implications.

## **11. WARD IMPLICATIONS**

All wards in the borough have access to the Grimsby Community Recycling Centre site therefore any improvements made will positively affect all.

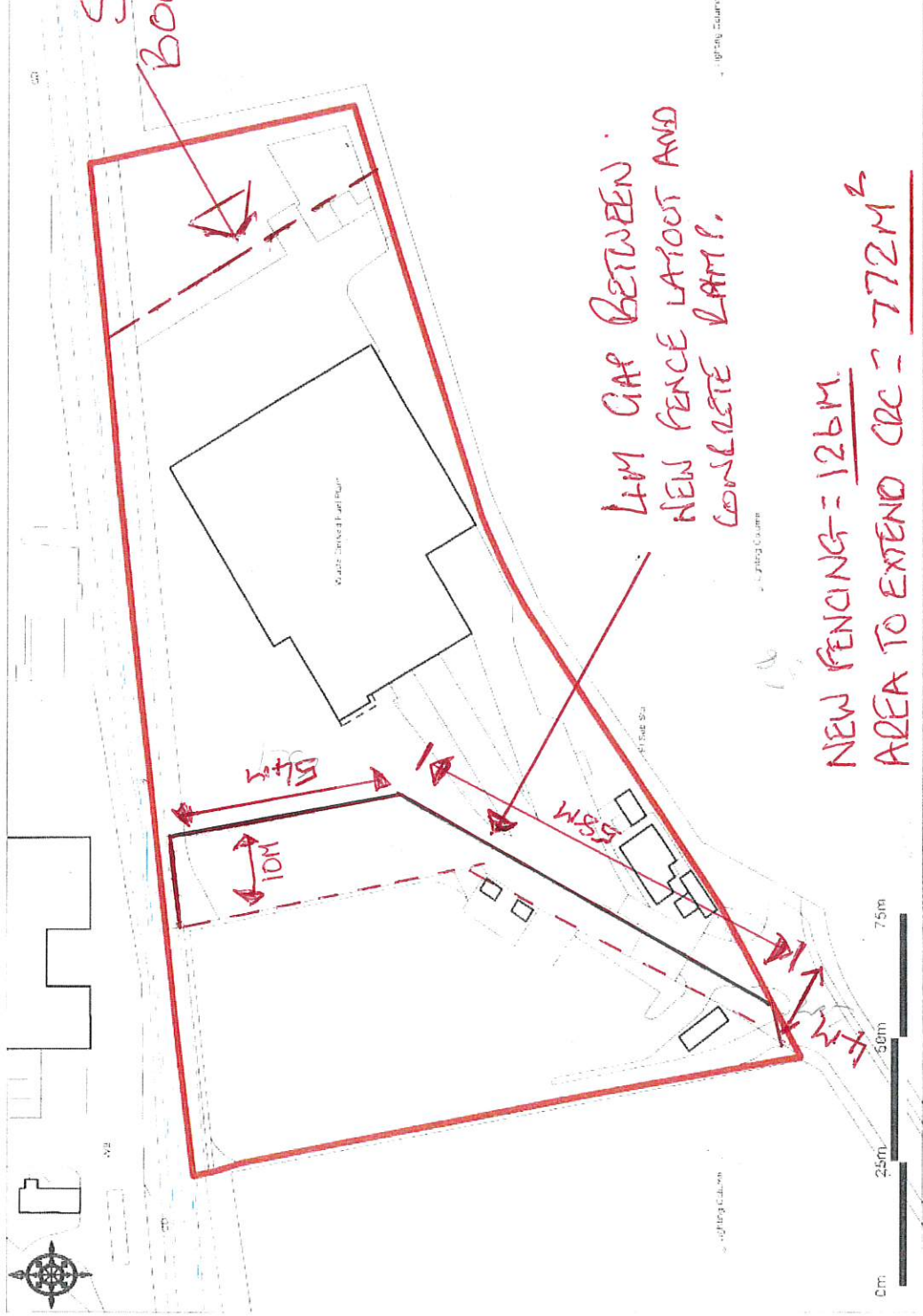
## **12. BACKGROUND PAPERS**

Cabinet Report: Community Recycling Centre Rationalisation 12 February 2020  
CB 01/20/06  
[www.nelincs.gov.uk](http://www.nelincs.gov.uk)

## **13. CONTACT OFFICER(S)**

Chris Dunn - Deputy Head of Operations - 01472 326185

**COUNCILLOR STEWART SWINBURN**  
**PORTFOLIO HOLDER FOR ENVIRONMENT AND TRANSPORT**



Copyright © 2008, Promap Ltd. All rights reserved. This document is the property of Promap Ltd. No part of this document may be reproduced without the prior written permission of Promap Ltd.